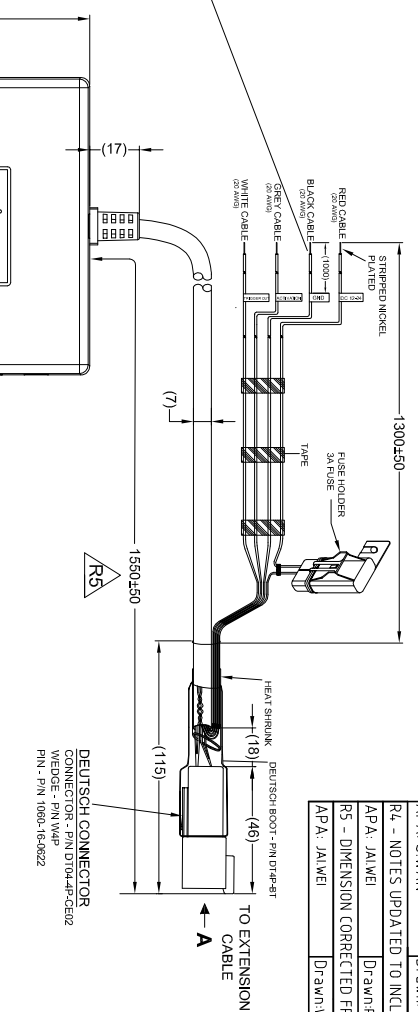
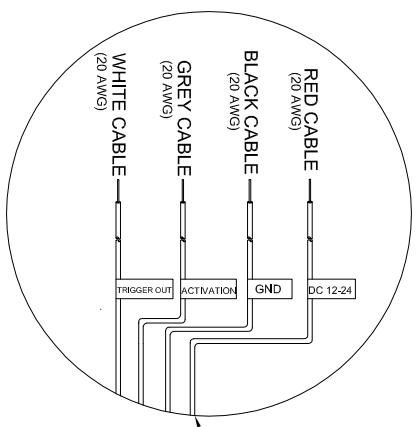


Revision Notes			
R2 - LED DISPLAY SOFTWARE VERSION UPDATED NO. ADDED AS PER ECR-A300			
AP.A. S.WAN	Drawn: LBRAR	Checked: AF	Approved: JOHN
AP.A. S.WAN	Drawn: LBRAR	Checked: AF	Approved: JOHN
R3 - LED DISPLAY SOFTWARE VERSION UPDATED AND UPDATED PCB ID NO. ADDED AS PER ECR-A306 & ECR-A307			
AP.A. S.WAN	Drawn: LBRAR	Checked: AF	Approved: JOHN
AP.A. S.WAN	Drawn: LBRAR	Checked: AF	Approved: JOHN
R4 - NOTES UPDATED TO INCLUDE SPARE PART RELEASE DETAILS - E3A37			
AP.A. JAIWEI	Drawn: BATES	Checked: B.CHILDS	Approved: JOHN
AP.A. JAIWEI	Drawn: BATES	Checked: B.CHILDS	Approved: JOHN
R5 - DIMENSION CORRECTED FROM 1500±20 TO 1550±50 AS PER 01784.			
AP.A. JAIWEI	Drawn: WEAZLEY	Checked: B.BATES	Approved: JOHN
AP.A. JAIWEI	Drawn: WEAZLEY	Checked: B.BATES	Approved: JOHN



VIEW A

PIN	WIRE COLOUR	DESCRIPTION
1	BROWN	GND
2	GREEN	CAN HIGH
3	YELLOW	+5V
4	BLUE	CAN LOW

ITEM	PART NO.	QTY	MODEL/DESCRIPTION
①	(4549)	1	BS-8000D-D/CONFIGURABLE LED DISPLAY ONLY
②	(4539)	1	BS-BKT-01/BACKET FOR LED DISPLAY

- NOTES:**
- MATERIAL: ABS/77E.
 - COLOR: BLACK.
 - FINISH: EXTERIOR SURFACES TO HAVE GRAIN STRUCTURE FINISH.
 - REFER TO PRODUCT SPECIFICATIONS FOR MORE DETAILS.
 - THE OUTSIDE CABLE INSULATION MUST END MINIMUM 20MM WITHIN THE BOOT.
 - SINGLE WIRES TO CABLE CONNECTION MUST END MINIMUM 20MM WITHIN THE HEAT SHRINK.
 - FOR PRODUCT LABEL REFER TO LATEST REVISION OF DRAWING BE-002767-XX-13.
 - FOR PRODUCT SERIAL NUMBER LABEL REFER TO LATEST REVISION OF DRAWING BE-002766-XX-13.
 - FIRMWARE VERSION RCW_PN4530_20140728 TO BE PRELOADED TO THE LED DISPLAY DURING MANUFACTURING.
 - LED DISPLAY PCB UPDATED TO 48UM/LED_2GEANG_20140528 VERSION.
 - WHEN SUPPLIED AS A SPARE PART, TO BE PACKAGED IN A SUITABLE BOX WITH A GIFTBOX LABEL APPLIED.
 - WHEN SUPPLIED AS A SPARE PART, FOR GIFTBOX LABEL REFER TO LABEL DRAWING BE-002755-XX-13.

PROPRIETARY NOTICE

THIS DESIGN AND TECHNICAL INFORMATION APPEARING ON THIS DRAWING IS THE PROPERTY OF BRIGADE ELECTRONICS, AND IS DISCLOSED IN CONFIDENCE. IT IS NOT TO BE COPIED, REPRODUCED, REVEALED TO OR EXPLOITED BY OTHERS, EITHER IN WHOLE OR IN PART WITHOUT THE EXPRESS WRITTEN CONSENT OF BRIGADE ELECTRONICS.

BRIGADE®
www.brigade-electronics.com

Angle of Projection
Third Angle

Assembly PI Approval A.CHAO	Approved by S.MATTHEWS	Checked by R.BATES	Drawn by L.BRAR
Units mm	Scale N/A	Released 15/01/14	Assembly Ref 8H1A-12901
Status RELEASED	Part No BS-8000D		
BE-002790-05-13			